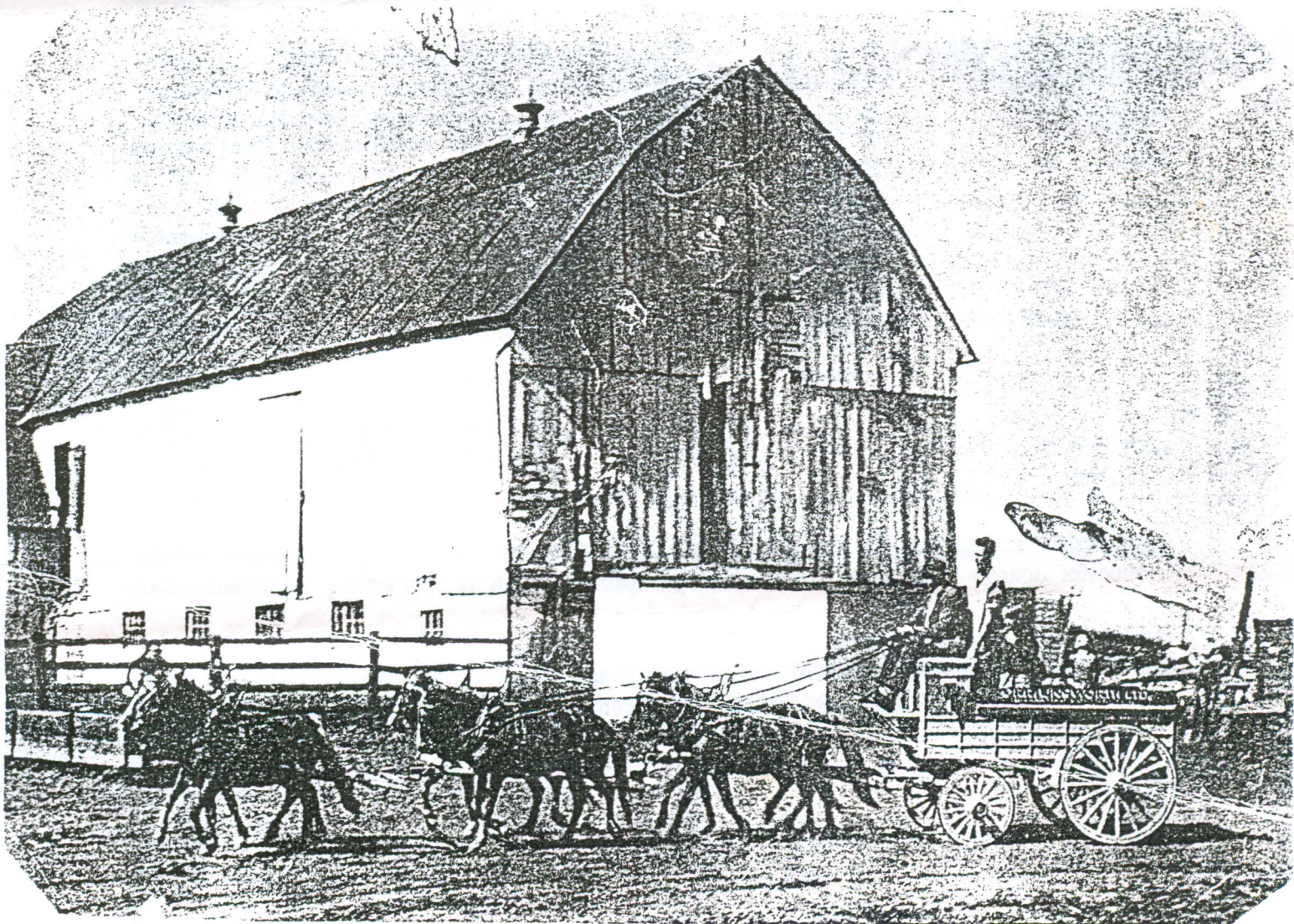


NEWSLETTER

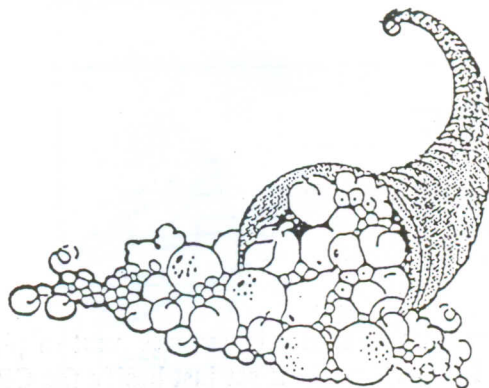
The GLOUCESTER HISTORICAL SOCIETY
and GLOUCESTER MUSEUM

October/November 1994



Six pony hitch: Orr Unsworth at his farm on River road, in the 1950's

MESSAGE FROM
THE PRESIDENT



Greetings to all!

Another busy season is beginning - where did the summer go? During July and August the regular City Archives and Genealogy day was manned by Mary Boyd and myself. (Thursdays, 11:00 a.m. to 4:00 p.m.)

Also during August an ad hoc executive meeting was held to discuss fall and winter programs. On the first Sunday of December, February and April, meetings will be held at 2:00 p.m. at 4550 Bank Street at Leitrim Road. Our December 4th meeting will feature author Kathleen O'Reilly Scanlon, whose book, TALES OUT OF SCHOOL, - memories of our teachers and how they influenced our lives. Something everyone can relate to! So bring a friend and come and enjoy reminiscing about school days. Suggested speakers are being contacted for the February and April meetings.

Through the efforts of Guy Legault the LACAC, (Local Architectural Conservation Advisory committee), has been resurrected, with Guy as chair. The historical society will be pleased to help in any way possible.

**Other interesting events of historical interest were:

60th anniversary of the Carlsbad Springs/Ramsayville Branch of the East Carleton Women's Institute, well attended!

The Hawthorne school 100th anniversary, when former teachers and students gathered to renew acquaintances and exchange memories of earlier days. Many attended despite the extreme heat that day.

An awards ceremony on the 30th anniversary of the Gloucester Police Services Board and the Gloucester Board - September 23/94. A very impressive evening, beautifully organized and of historical significance.

That same week we attended a dinner and reunion celebrating the Rideau Township Historical Society's 20 years of activity, preserving and documenting the township's history. A dedicated group who have not lost their love of local history. It was a very pleasant evening and a good time was had by all, as reminiscences were shared by past presidents of the Society.

Sincerely,

Lillian Kitchen

The first station at Blackburn was built of plank, sturdy and efficient, with dark red stain on the outside and a black roof. It sat just beside the CPR track where the Anderson Road intersects with the railway tracks. (Anderson Road was simply called the "sideroad" at that time). The building was possibly 20 by 12 feet with a large overhang at the front, designed to shelter travellers from the elements.

Inside, there was one main room, completely ringed with a wide built-in bench, to hold sleeping children, baggage etc. Overhead were a few large wooden pegs, to hold luggage or bags, and near the door, a peg to hold the lantern, with a compartment in one side to store the green and white flag. A door in one corner led to the coal bin, and a nail on the door made sure the coal scuttle was near at hand. By the door, was a posted sheet, which gave instructions as to what was to be done in order to have the train stop. The only other item was a large round stove in the centre of the room, settled on a square piece of tin.

Passengers came early when they wished to board the train, as the time schedule was rather slack. They could build a fire, stoke it up and settle in to wait. Through a window, they could keep an eye out for the train, and when it rounded the curve a few miles up the track, the posted sheet of procedures was to be followed.

Blackburn always had a Station Master, who lived in a house provided by the railway, and painted the same dark red with a black roof. The Station Master would wander over to make sure that the mail was put on board and to receive any mail that was dropped off by the train crew. A hook to hold the bag of outgoing mail hung on a pole at the edge of the platform, and when no passengers were waiting, the train would just slow down, pick up the sack from the hook, pick up speed, and be on its way.

As the train came into view, the posted sheet of instructions stated that the travellers were to:

- place the flag on the holder provided on the platform,
- light the lantern, stand on the platform and slowly swing the lantern to and fro, so that the Engineer could spot it in the distance, and
- make sure the stove was 'dampered' before the traveller climbed aboard the train.

When the train reached the end of the long platform, the flag was to be taken inside, the lantern blown out and placed in the station, the door was to be closed.

In the 1950's, one cold evening, the stove had just been stoked up, when the train rounded the curve, and the lady who was waiting, took her luggage to the platform, leaving the stove undampered. A few hours later, the fire caught and the station was demolished. The fire smouldered for many days until the coal supply ran out.

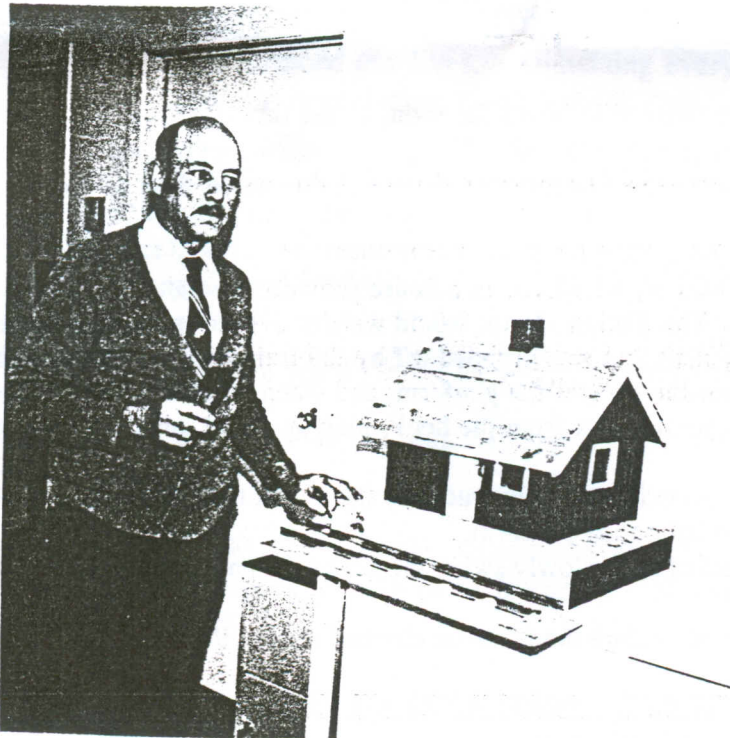
The CPR brought a replacement building to the site on a flatcar, and set it beside the spot where the old one had been. It served the community until the '80s, when it was sold to Mr. Fernand Chenier, a local merchant. He put it to use as a storage shed at his Renaud Road property, and some years later, sold it to a family named Pitt, who lived in Cyrville on Maxime Street.

In November, 1993, I took a drive down Maxime Street to see if I could spot it in someone's backyard. I asked a few older residents about Mr. Pitt, and one remembered a Mr. Pitre who had a building resembling the station in his yard as a playhouse for his children. He moved to Limoges, the man told me, and had refused offers from neighbours who wanted to buy the building.

So far as I know, the old Blackburn station sits somewhere in Limoges, Ontario. It would be interesting to know if anyone has seen it there.

Ruth Lafortune

The Gloucester Historical Society is constantly looking for stories of times past, portraying a family, a happening, an interesting event, having to do with the history of Gloucester. If you have such a story, or would like to discuss with us some situation of historic interest in Gloucester's past, please give the GHS a call. 822 - 2076 Ruth Lafortune or Mary Boyd



David Mackie with model he made of Blackburn Station, and donated to Gloucester Museum

Gloucester Historical Society
Société historique de Gloucester

year - \$10.00
lifetime - \$40.00

Membership/Adhésion
1994

Name: _____

Address: _____

Please send cheque to the: Gloucester Historical Society
4550B Bank Street
Gloucester, Ontario
K1G 3N4

(Tel: 822 - 2076)

GLOUCESTER MUSEUM NEWS

Have you ever wondered what went on behind the fence at the LETE Proving Grounds on the Montreal Road?

For answers to your questions, come to the opening of the exhibit

The Proving Ground

Land Engineering Testing Establishment

LETE

in retrospect

at the Gloucester Museum on November 10th at 7:30 p.m.



Knowing that the proving ground would close this September, after forming a part of the Gloucester community for over fifty years, Bill Mellon approached officers at LETE this spring about the possibility of an exhibit. During the summer he collected photographs, models and information about LETE's operations. Since then Sheila Rorke, the museum's new Assistant Curator, has designed an exhibit that will introduce you to this fascinating military establishment.

WELCOME BACK ALGONQUIN!

The museum is once again a hive of activity as we welcome back students from the Algonquin College Museum Technology program. **Donald Dingwall** and **Carol Hopp** are here on Wednesdays working on various Registration projects as part of their field placement. They are being kept very busy with a backlog of paperwork and interesting artifacts.

The exhibit **Hawthorne** will be produced by the enthusiastic team of **Blaine Cameron**, **Michele Jonas** and **Jennifer McDonald**. The exhibit will open in early May. They have been very busy during the last month collecting information and They are eager to hear from former Hawthorne residents. Please call the museum 822-2076 to let them know if you have artifacts, photographs to loan or information and memories to be included in the exhibit.

A number of other students have expressed interest in placements in Education Programming, Collections Management, Conservation and Registration during the year.

Their help is fantastic!

Welcome aboard!

Sheila Rorke has joined the museum staff as Assistant Curator and is very busy preparing the exhibit **The Proving Ground** for November 10, 1994.

NEW ARTIFACTS IN COLLECTION

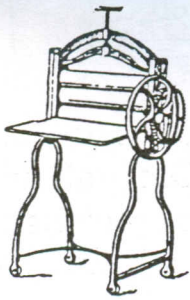
DISHES - sauce boat and serving plate, fruit bowl, dinner plate, cup and saucer, egg cups, butter pat, candy dish,

SILVER - salt spoons, jelly spoon, fruit spoon, coffee spoon, fish knife, ladle, knives

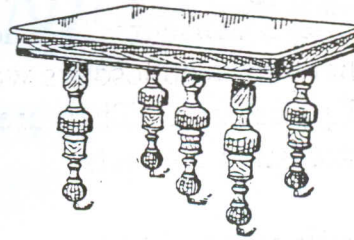
ONLY A FEW OF MANY !! THANKS TO ALL THOSE PEOPLE WHO DONATED ARTICLES, PHOTOGRAPHS, AND DOCUMENTS

GUESS EACH ITEM'S USE,
AND/OR PRICE IN 1901
(SEE ANSWERS IN MIDDLE OF PAGE)

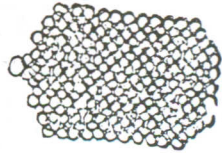
1.



2.



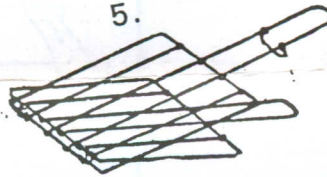
3.



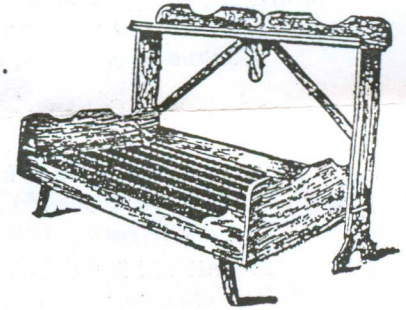
4.



5.



6.



1. A MANGLE (wringer) - \$15.00 2. OAK DINING TABLE - \$9.85 3. WIRE DISH CLOTH - .05 CENTS 4. CUSPIDOR (SPITTOON) - .50 CENTS 5. TOASTING RACKS .06 TO 12 CENTS 6. SOLID OAK FOLDING BED - \$6.95

Gloucester Historical Society
Publications

Old Gloucester City Hall
4550B Bank St. (at Leitrim Rd.)
K1G 3N4
822-2076

Memories of the Lockstations:

Memories of Long Island, Black Rapids,
Hog's Back and Hartwell's
18 pp with photos, 8 1/2" x 11"
\$4.00

Gloucester Roots

Edited by L. Kemp. A collection of articles
and photographs from the Gloucester Roots
column in the Leader. Most of the articles
written by Grace Johnston. Organized into
Beginnings, People, Homes, Schools,
Activities, Places, Stories, Symbols
\$15.00 126 pp.

Bowesville: A Place to Remember

by Grace Johnston. A detailed history of
the town which was levelled to make way
for the Uplands Airport. Full of photos
and family histories. 173 pp. \$15.00

**Carlsbad Springs/Ramsayville Branch
East Carleton Women's Institute
1934-1994**

Records the beginning of the Institute
and highlights its 60 years. 18pp. \$4.00

**Milk/Cream Producers in Gloucester
1892-1975**

Compiled by Grace Johnston
Many photographs in this 42-page book
which describes the dozens of dairies to be
found in Gloucester. An excellent refer-
ence book with its lists of producers and
distributors and bibliography.
8 1/2" by 11" - \$10.00

Valley Views

A collection of poems by N. Mackie of
Gloucester. Includes poems about local
families, area events as well as
reflective poems. \$10.00 193 pp.

Blackburn - Glen Ogilvie

Centennial History 1867-1967
Compiled by Mrs. Anna Elliott
A comprehensive history of the area.
Indexed by family name. Photos and lists
teachers in the area schools. \$2.00 34pp.

Map of Gloucester

1879 Map of Gloucester from the Belden
Atlas. On parchment - Suitable for
mounting. \$3.00

Location & Hours Open

The Gloucester Historical Society and Gloucester Museum
(also location of Municipal Archives)
4550B Bank Street at Leitrim Rd.

Museum Hours: Tues., Wed., & Thurs., 10:00 a.m. to 4:00 p.m.
Sunday - 1:00 p.m. to 4:00 p.m., (July & August by request)
Educational programs are available for schools,
youth organizations, service clubs and groups.

Historical Society : Grace Johnston History Room Hours
(And The City of Gloucester Archives)
Thursdays, 1:00 p.m. to 4:00 p.m.
(other appointments by request)

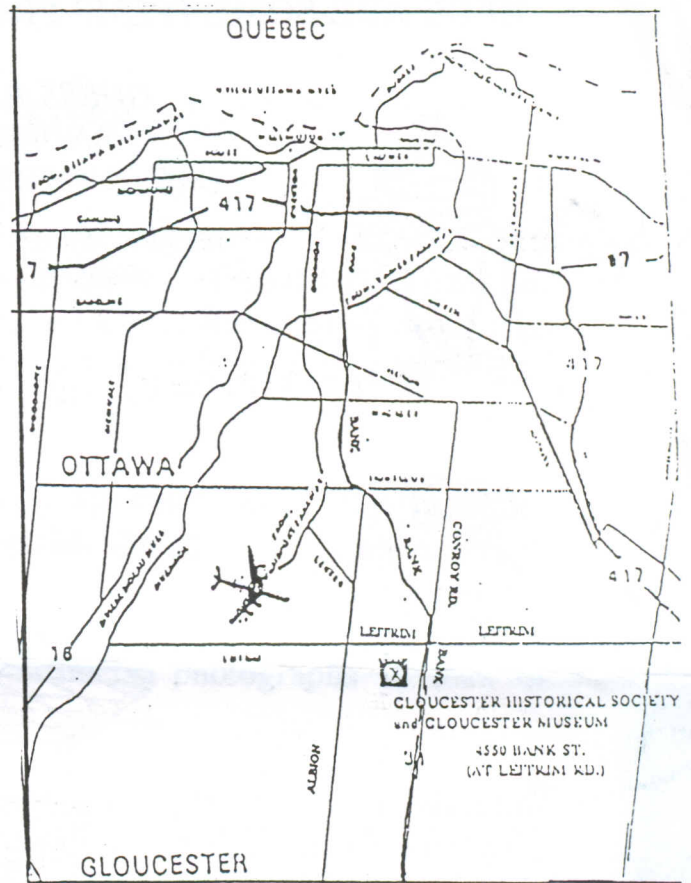
Société historique de Gloucester et Musée de Gloucester
Musée, Société historique et les Archives municipales,
bureau de S.H.G.
4550 rue Bank intersection chemin Leitrim

Musée: mardi, mercredi, jeudi
10 h 00 à 16 h00
mai - octobre 13 h00 à 16 h00

Desessions educatives sont disponibles pour les enfants d'age scolaire,
les groups et clubs sociaux

Société historique : La salle historique Grace Johnston
(et les Archives municipales)
les jeudis, de 13 h 00 à 16 h 00 (sur rendez-vous)

INFORMATION: 822-2076



GLOUCESTER HISTORICAL SOCIETY
BOARD OF DIRECTORS
1994 - 1995

GHS OFFICE: 822 - 2076

OFFICERS

LILLIAN KITCHEN	President	521 - 1399
RUTH LAFORTUNE	Secretary	822 - 2648
GRAHAM RITCHIE	Treasurer	521 - 5805

BOARD MEMBERS

JACQUELINE RAWES	Educational Outreach	837 - 7532
MARY BOYD	Grace Johnston History Room	822 - 1885
WILLIAM MELLON	Programs Advisor	745 - 3977
MARY PATTERSON	Membership Chairman	822 - 2864
RONALD KITCHEN	Photography & Reproductions	521 - 1399
ALBERT LAFORTUNE	Property & Building Co-Chair	822 - 2648
DAVID MACKIE	Property & Building Co_Chair	822 - 2076
GUY LEGAULT	Lacac & Heritage Advisor	830 - 4243

LILLIAN KITCHEN Gloucester Historical Society Rep. to LACAV

MUSEUM DIRECTOR/CURATOR
ASSISTANT CURATOR

Lynne Terroux	822 - 2076
Sheila Rorke	822 - 2076

