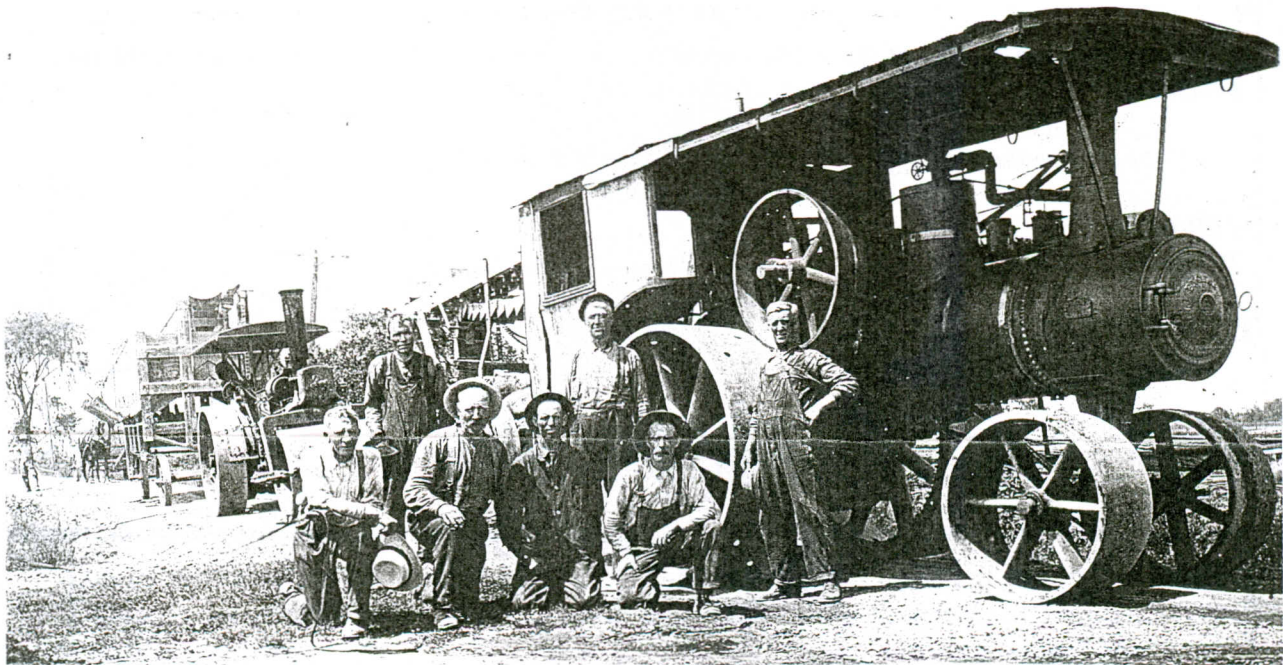


Autumn 1996 Newsletter

Gloucester Historical Society and Museum



Threshing Crew circa 1920
With Hobart Hanna's Threshing Machine

Notes From the President

Dear Historical Society Members:

All too soon summer is over and darkness comes early. With the help of a Provincial grant, both the Museum and the Historical Society shared the benefits of having a student helper, Susan Doherty. She worked with our curator Deborah Scott from Mondays to Wednesdays, and with our Archives person, Mary Boyd, the following two days. Deborah has been busy coordinating and planning a new Museum exhibit, celebrating the history of early sports in Gloucester. Our appreciation to the many interested people who have loaned their precious belongings for this special exhibit.

Regarding the archival area, Mary Boyd and Susan Doherty spent many hours in upgrading the Historical Society's Archives. A big job well done. Thanks also to Curator Deborah Scott, Ontario Archives Association advisor Johanne Pelletier, volunteer Jean-Marc Jossinet and City of Gloucester's Gilles Seguin, for their advice and encouragement.

We are planning a general meeting in the near future with a guest speaker. Members and friends will be invited to come and learn first hand what the Society has been up to in the past months. Date and time to be announced shortly.

Thanks to the efforts of the Editorial committee chaired by Florence Ladds, an interesting brochure has been produced, a copy of which is enclosed.

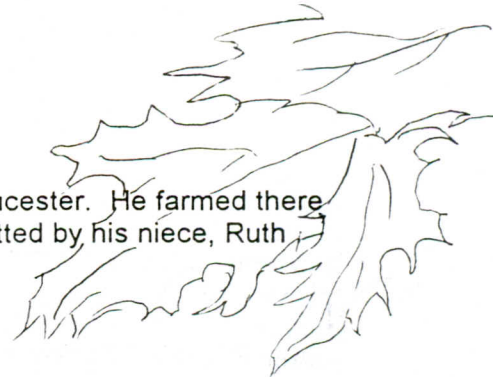
I hope everyone will enjoy the coming Christmas season.

*Lillian Kitchen
President GHS/1996*



OBITUARY

The members of the Gloucester Historical Society and Museum were saddened to note the passing of A. Kennedy Johnston, a long time resident of Gloucester, who leaves a family of 2 sons and four grandchildren. His wife, Grace, predeceased her husband in 1990. Ken and Grace joined the Gloucester Historical Society in 1961, and were faithful workers for many years. Their goal was to secure proper housing for the Gloucester historical records and artifacts that had been collected by many members over a period of some 40 years. This became a reality for them in 1989 when negotiation with the City made available adequate premises in which to store Gloucester's history. Ken will be missed by us all, and his dedication to this project will long be remembered by all residents of Gloucester.



David Mackie lived on the family homestead on the Ridge Road in Gloucester. He farmed there all his adult life, and died in 1954 at the age of 66. This article is submitted by his niece, Ruth (Mackie) Lafortune.

THRESHING DAYS AT THE FARM - 1930s

Late August to mid September was a busy time on the farm. Haying was completed, the grain was ripening and ready for threshing, and the corn would soon be ready for harvesting.

My Uncle Dave was a bachelor, and when I was a child, my brothers and sisters and I spent a lot of time with him. He was the uncle who provided treats when we came to visit, like the chocolate covered marshmallow biscuits and three-coloured jellies, and as long as Mom and Pop were not with us, we could indulge to our hearts' content.

We helped him out by picking plums and crab apples which he transformed into preserves so thick that it had to be dug out of the jars with a large spoon. We also picked cucumbers which he put in crocks with brine and stalks of dill. Soon he had pickles that made our mouths shrivel and pucker as we ate. Delicious, absolutely delicious.

The best time of all was when threshing time came. We were all on deck for duty and we carried lemonade and pails of water to the men at the barn. One of the best thirst quenching drinks consisted of cold water from the well, with a couple of handfuls of oatmeal added. This turned the water milky white, and the men drank from the tin dipper to quench their thirst after working in the hot sun.

We nephews and nieces took over the everyday chores during threshing days, finding eggs, milking cows, feeding pigs and chickens, while my Uncle worked with the men at the barn. We felt like a real part of the team at that time, and the first time that I was included in the work group was when I

was about 7 years of age, old enough to carry wood and young enough to run errands.

About a dozen men and six teams were at the farm ready for work at 8:30 or 9:00 o'clock, and they worked from morning until coffee break. My Uncle was the expert at making coffee - he filled a large agate pot with cold water, added a few handfuls of coffee, and he stewed, and brewed it on the wood stove, then moved it to the back of the stove where it simmered until he was ready for it. He would then take large agate mugs, the huge pot of coffee, a large jug of thick cream, and a bowl of sugar and disappear behind the milk house to a shaded area. As the men came from the field with a load of sheaves, they would come over to have a cup and chat for a short time. Uncle added to the pot as the day went on, a bit of coffee, a bit more water, so it was always hot and steamy when he needed it. The teams took advantage of the break, and rested in the shade, swishing their tails, heads lowered as though asleep, or drank from the trough while we pumped water for them.

One of the farm buildings shielded the barnyard from view as we worked near the house, but all day we could see a huge cloud of dust and chaff rising over the rooves of the buildings. We ventured down to sit on the gate and watch the proceedings when we had a chance.

The sheaves were hoisted from the wagons by pitchfork up on to the tread, which then carried them into the mill. The grain ran down through a chute into bags that were held open by a metal ring on a stand, and as the bags on the side of the machine filled with grain, the one in charge of loading the stoneboat would swing the bags out and replace them with empty ones,

From the Curator's Corner: Happenings at Musée Gloucester Museum

During the past seven months, we have been actively pursuing our goal of delivering heritage-based services to the community. In particular, we have developed several portable exhibits for display at various locations around Gloucester. These include:

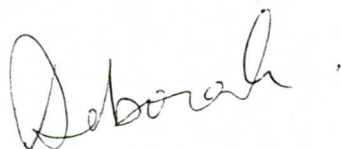
- * an exhibit on the Mer Bleue, entitled "The Mer Bleue Files", on display in the foyer at Gloucester High School April through June
- * a promotional exhibit on the Museum and Historical Society, displayed at the 25th anniversary Blackburn Fair in June (along with 'hands on' demonstrations of butter making, ice cream making and cream separating!)
- * "Gloucester and the Great Fire of 1870", currently on display in the community meeting room at the new Leitrim Fire Station

As well, the Museum received funding (with support from Federal MP Eugene Bellemare) for a summer student to develop a travelling exhibit on ice sports in Gloucester. Find out more about the exciting opening of this exhibit elsewhere in the Newsletter!

Work is underway on two additional exhibit projects. The first, titled "Did You Know?" will present interesting facts and figures about Gloucester. Third year Museum Technology Programme student Kathleen Conibear (who did the research for this exhibit during her field placement with the Museum last January) has been hired on a short-term contract to fabricate and install the display on our upstairs gallery. The second project features the mineral springs at Carlsbad, and is scheduled to open in conjunction with the unveiling of a heritage designation plaque at Carlsbad next May.

With respect to programming, the Museum is looking at 1997 as the year in which to develop strong outreach programs for learners in our community. As a result of our very positive experience with adult English as a Second Language classes who visited the Museum, we are keen to explore program possibilities with ESL groups in Gloucester. We are also working on developing an advisory committee of teachers in Gloucester schools, to assist us with identifying themes and strategies for school programs. Clearly, there is no shortage of wonderful projects on which to work!

The real challenge is maintaining enough funding and volunteers to carry on the Museum's mandate of preserving and presenting Gloucester's "material" history. Already, the Museum's operating grant for 1997 has been reduced by 10%, and will likely be reduced by *more* than that amount in 1998. Over the summer, considerable time and energy has gone into making city staff and council members more aware of the value of the services we provide. Ultimately, however, whether or not the Museum survives will depend on the actions of people who care about heritage, like yourselves. So...if you live in Gloucester, please pick up that phone and contact your local member of council. Then give us a call to see when you can come in and volunteer!



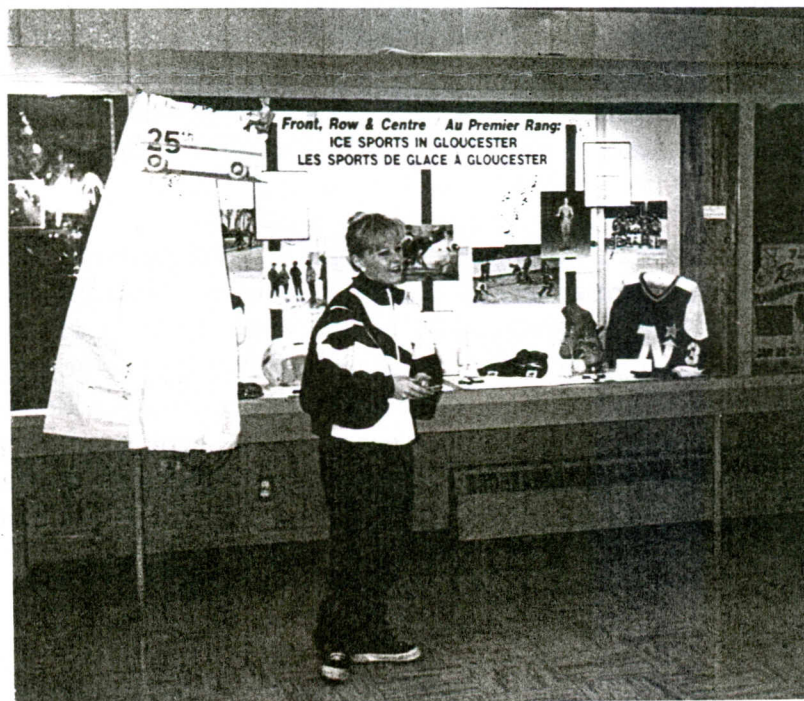
Ice Sports Exhibit Hits the Road!

The morning of Saturday, October 26, dawned warm and sunny - just the kind of fall day Gloucester Museum staff and volunteers had ordered for the opening of the museum's new travelling exhibit on Ice Sports in Gloucester! The feeling of anticipation grew as we put the finishing touches on the exhibit and got ready for our distinguished guest: no less than Gloucester's own Elizabeth Manley herself! In town for the 25th anniversary of the Gloucester Skating Club (the third largest in Canada), Manley graciously agreed to open the museum's exhibit prior to headlining the Club's gala skating show "A Trip Down Memory Lane". As well, she generously loaned a pair of her skates to the museum for the display.

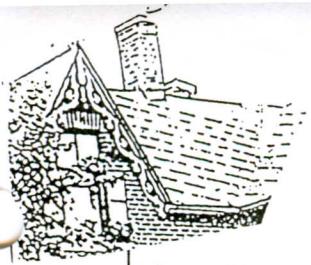
Following introductory comments by student Susan Doherty (who developed the exhibit and acted as M.C.) and Curator Deborah Scott, Elizabeth delighted the group of 50-60 guests assembled with recollections of her skating years in Gloucester. As the place in which she began her now internationally-renowned career, Gloucester holds special significance. Elizabeth's warmth, "down-to-earthness", humour and sincerity touched all of us who were there. A great round of applause broke out as Elizabeth pushed the cardboard zamboni and curtain across the front of the exhibit case, thereby "clearing the ice" for the museum's latest project.

Those of us who were fortunate enough to attend the 2-hour skating show after the opening were truly impressed by Elizabeth's artistry on the ice. The efforts of the many skaters of all levels and ages who participated, combined with the wonderful music, costumes and special effects, made the show a really fun and memorable event.

Many thanks to all of you who assisted with the exhibit and our opening event. "Front Row & Centre: Ice Sports In Gloucester" will remain in the crush space at the Earl Armstrong arena until the end of the year. After that, look for it at the Orleans Complex (January-February) and at the Blackburn Arena (March-April).



A HISTORY OF KEMPARK HAS BEEN COMPLETED



The Kempark Historical Committee is pleased to announce that their book "KEMPARK: THEN AND NOW" has now been published.

The Committee will be holding a book launch on:

Saturday, November 16, 1996
2:00 p.m to 4:00 p.m.
at

Gloucester Public Library
Blossom Park Branch
2950 Highway 31

Everyone is welcome to attend. A special invitation is extended to former residents of Kempark.

Copies of the book will be available for viewing and purchase. Light refreshments will be served.

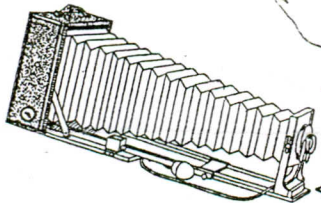
If you would like to purchase a book but are unable to attend, please call - Bev Clark at 521-1819

Don't Miss...

FESTIVARTS '96!

Have some gift shopping to do before Christmas? Why not head for the Gloucester Centre on Saturday, November 23 between 10 a.m. and 4 p.m.? There you will find a rich variety of gorgeous arts and crafts produced by the many talented individuals who live in Gloucester.

As part of FestivArts '96, the Gloucester Museum will be displaying old-fashioned toys and inviting children of all ages to join us in making Victorian decorations.



<<<<<<<<<<< Flashback <<<<<<<<<<<<<<<<<<<<<<<<

Colonel By Day

On August 5th the Gloucester Historical Society took part in the celebration of Colonel By Day by having a table at the Bytown Museum.

The Museum's grounds provided a scenic setting from which a variety of heritage organizations met each other, and the public, to exchange information and share their views on heritage in the Ottawa area.

The day started out with a re-dedication ceremony of the statue of Colonel By, in Majors's Hill Park. The Historical Society of Ottawa arranged the day's activities..

It was a beautiful day, and as always the blueberries were delicious!

BIFHSGO

September 28th Ruth Lafortune and Mary Boyd attended the Saturday marketplace, held again this year at Ottawa's City Hall. Approximately 12 groups including the GHS had tables set up in Whitton Hall, to display and sell books, forms, maps, crests, and other material relevant to the researching of history and genealogy.

Sales were brisk in some areas and interest in computer material was high. Informal discussions were held at every booth, and information was exchanged between the various societies and groups.

Guy Legault attended Sunday and reported a good turnout of groups who were knowledgeable in all aspects of genealogy. Contacts were made and information exchanged during both days.

From the Gloucester Historical Society Executive:

Owing to illness in Lillian's family, Guy Legault has offered to take on the duties of President until the next general meeting . We will miss Lillian and her expertise, and hope that she will be back with us soon. In the meantime our thoughts are with both Lillian and Ron.

Gloucester Historical Society
Executive 1996/97

Officers

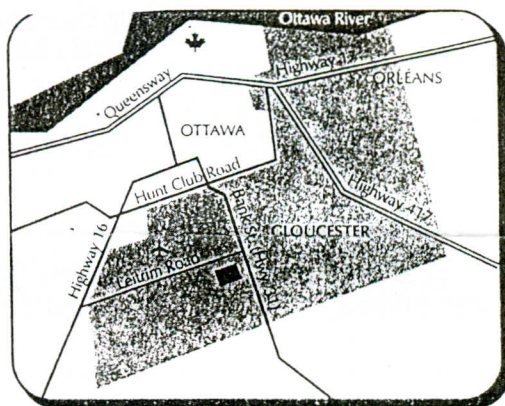
Lillian Kitchen
Guy Legault
Mary Patterson
Ruth Lafortune
Graham Ritchie

President
Acting President
Vice - President
Secretary
Treasurer

Board Members

Guy Legault
Jacqueline Rawes
Florence Ladds
Mary Boyd
Albert Lafortune
David Mackie
Mary Patterson

History and Communications
Education
Editorial & Ways and Means
Archives and Research Room
Building
Building
Chair of Museum Committee



4550 Bank Street (at Leitrim Road)
Accessible by OC Transpo

<u>Cost</u>	<u>Books Available</u>
3.00	Belden Atlas Maps
4.00	Blackburn - Glen Ogilvie
15.00	Bowesville - A Place to Remember
4.00	Gloucester Memories
10.00	History of Gloucester His. Soc.
4.00	Memories of the Lockstations
10.00	Milk/Cream Distributors
4.00	60th Anniversary Carlsbad/Ramsayville W.I.

*Gloucester Historical Society
Société historique de Gloucester
Membership/Adhesion Application
1996*

NAME: _____

ADDRESS: _____

POSTAL CODE: _____

Memberships: \$10.00 (Yearly)

\$40.00 (Life Membership)

Mail to: Gloucester Historical Society
Société historique de Gloucester
4550b Bank street
Gloucester, ON,
KIT 3W6

Telephone: (613) 822-2076

Hours: Mondays to Thursdays (10:00 am to 5:00 pm)