

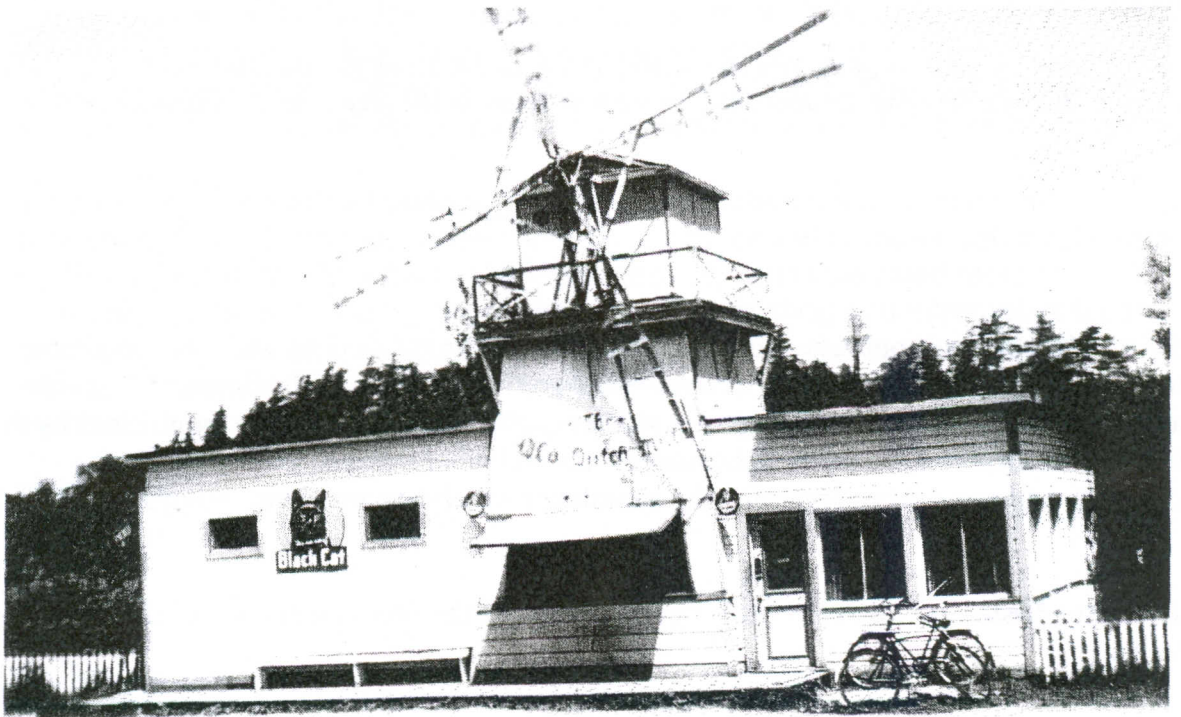
HISTORIC GLOUCESTER

Quarterly Newsletter of

*The GLOUCESTER HISTORICAL SOCIETY
and The GLOUCESTER MUSEUM and ARCHIVES*

VOLUME 4 NO. 1

WINTER 2003



THE OLD DUTCH MILL

TABLE OF CONTENTS

President's Message	Guy Legault	1
Do You Know Where These Places Were?.....	Joan Scott	2
Ottawa Jewish Historical Society.....	Joan Scott	4
Annual General Meeting.....		6
Membership Form.....		8

COVER PHOTO:

The cover photo is of the Old Dutch Mill which used to be on the old canal road, now Colonel By Drive. It was a very popular spot and was the first eatery in the area to serve customers in their cars.

Historic Gloucester is published by The Gloucester Historical Society and The Gloucester Museum and Archives. It is intended as a Newsletter to members of the Society to provide interesting articles on Gloucester's past and to keep them informed of new acquisitions by the Museum, publications available, upcoming events and other items of general interest. Comments and suggestions regarding the Newsletter are always welcome.

Gloucester Historical Society gratefully acknowledges the financial support of the City of Ottawa.

President's Report

The Gloucester Historical Society now has a new brochure. Copies were sent to all members, along with the advertisement of our recent heritage month event. More copies will be available at the Annual General Meeting to be held at the GHS at 2 P.M. April 27, 2003. Please feel free to distribute copies to friends and anyone interested in joining.

Our Heritage Month activity, held at the GHS on February 2, was well received by a wide section of local people. Ken Clavette of the Worker's Heritage Committee spoke about the construction of the Rideau Canal in the period 1826-1832 during which over 500 lives were lost due to accidents and disease, with thousands more injured. Most of the deceased were Irish. Several published histories refer to this period, praising the principals, including Colonel John By. But, until recently there has been little recognition of the workers and of their heavy losses during the construction of the Canal. In 2002 a Celtic Cross was erected on the Canal near Kingston to commemorate these workers: another is being prepared for an Ottawa site, hopefully this fall. Ken Clavette's committee are continuing successfully to speak and raise funds at other events in the area.

Your Board of Directors hopes to launch a new project soon to continue the collection of oral histories. These records will be added to those obtained earlier by Grace Johnston. To ensure this becomes a success we need more volunteers to help in visiting people who have interesting and informative local stories to tell. We also need help with the management of these archival records. Please call us at 822-2076 and leave us the names and telephone numbers of people who can be of help with this project.

Guy H. Legault

DO YOU KNOW WHERE THESE PLACES WERE?

by Joan Scott

In her book *Gloucester Roots*, Lois Kemp tells some very interesting stories about people and places of Gloucester. Here are a few places or things from Gloucester of yesteryear that you may, or may not, have heard about. If you want to learn more about them, there is additional information in Lois Kemp's book which is still available from the Gloucester Historical Society.

Jacob's Well. Farmers taking their produce to market in Ottawa or wending their way home after a busy day of selling, frequently stopped for a long, cool drink of fresh well water for themselves and their weary horses. Jacob's Well was situated on the old George Fenton farm which was sold to William Lynch in the mid-twenties and is now part of the golf course. It was situated south of Lester's Sideroad, west of Lynch Street, conveniently accessible for travellers along the old "stone road" or Metcalfe Road which is now known as Highway 31. The old-fashioned wooden pump with a hollowed-out tree trunk for a trough, sported an agate dipper hung at its side and a basswood roof which bore the sign "Jacob's Well."

Bogtown School. Sometimes called "Kerwin's School," Roman Catholic elementary students from School Sections 4, 5 and 12 attended classes at this site from the early 1880s until 1924 when it was demolished. In this small one-room building, the teacher's desk, with a top that could be raised, was on a platform at the front of the room. The desks for the pupils seated two and had pencil grooves and inkwells - much to the delight of the boys who would dip the braids of the girl in front into the inkwell if she was not careful! The

school was on the Foran farm on the southeast corner of the junction of the Bogtown Road and Tommy Graham's Sideroad. That is, at the southeast corner of the junction of the Armstrong and Bowesville Roads south of the airport.

Farmer's Corners. When Highway 417 was built it cut through Farmer's Way which ran south from Mer Bleue to Regional Road No. 8. Part of the road was closed off but a new curve made an adjustment to the remainder of the south part, which continues still today through Farmer's Corners and Piperville to Regional Road 8. Farmer's Corners was best known for its church on the northwest corner of the 8th line beside the Farmer home. From 1886 to 1925 the church was Presbyterian, then from 1925 to 1962 it was United. Many long time residents of the area had happy memories of functions held at the church before it was demolished when the congregations of Farmer's Corners and East Gloucester joined to become Bethany United Church at Ramsayville. The porch from the Farmer's Corners church was given to the Greely Anglican Church and its cross was given to the Hawthorne United Church. The Gloucester Historical Society has the wooden sign-board which was made by Harold Vodden.

Tomlinson's General Store. While building the Rideau Canal Colonel John By had his men cut out a road for bringing in supplies and this became known as the Montreal Road. It was a well travelled route by 1890 when Tomlinson started his store on the north side, just east of the Blair (then Skead) Road. The store was surrounded by seven acres of orchard from which he sold

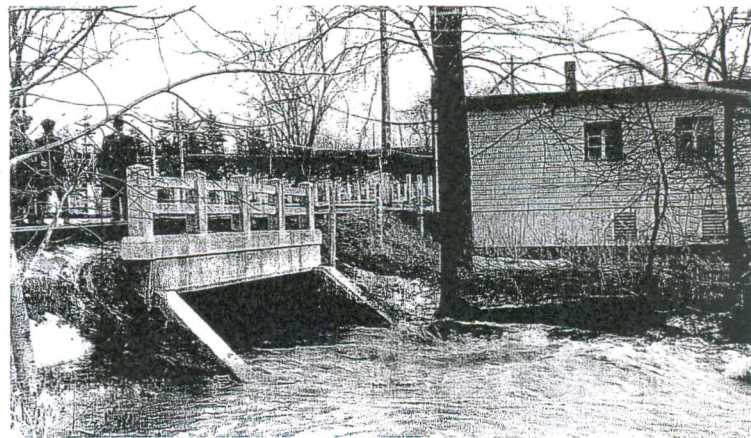
pears, yellow and blue grapes, apples and crabapples. The store was decorated on the outside with signs advertising Old Chum or Stag Plug Tobacco and the inside was stacked with all sorts of delights from penny candies, food, clothing, and hardware. The living quarters were at the back of the store and if Tomlinson was not out there playing the piano, flute or mouth-organ, he might be found resting on the wide front verandah.

The Old Dutch Mill. This was the first eatery in the area to serve customers in their cars. It was on the canal road (now Colonel By Drive) and was built about 1930 by Captain Edgar Mitchell and Barry Anderson. The Mill was a popular spot for many years, not only for the cottagers who dotted the winding road, but also for people who came out from the city for a Sunday drive

The Tallest Tree in Gloucester. Visible from as far away as the lawn of the Parliament Buildings and the Village of Navan, the stately pine, with its lowest branches 25 feet from the ground, stood like a beacon on the Borthwick Ridge. It was on Lot 8, Concession 5, Ottawa Front, owned by the Geymonat family from 1911 to 1961. Three teenaged Geymonat lads decided to measure the tree's girth one day and found that they could barely encircle it by joining hands around the huge trunk at the base. In 1919 the top of the tree was cracked off in an electrical storm and it was decided to cut it down. Sufficient lumber was obtained from this one tree to build an entire machine shed as well as a high-sided wagon.

Sawmill Creek. People today would have a hard time trying to find what is left of Sawmill Creek. Underground piping and developed land in the area have all but obliterated it, but it was once a force to

contend with. The mill which gave the creek its name was built by Braddish Billings on the east side of Bank Street directly south of the CNR tracks at Billings' Bridge. In spring the creek was a raging torrent as it made its way from its source at the swamp south of the Davidson Side Road on Albion Road, through what is now Kemp Park, Blossom Park, Sawmill Creek Pool and South Keys, then west of Bank Street, across the Walkley and Heron Roads, then first east and then west under Bank Street and on into the Rideau at the Billings Bridge. Flooding was an annual rite of spring with the water rising to the steps of Gloucester's 1874-1962 Town Hall on Bank Street. Around the turn of the century the old mill was destroyed by fire.



Sawmill Creek in Flood, 1922

OTTAWA JEWISH HISTORICAL SOCIETY

By Joan Scott

After the article in our last Newsletter on Gloucester Pioneer Cemeteries, the Ottawa Jewish Historical Society contacted us to advise that they did, in fact, have much more information available on the United Jewish Community Cemetery. In fact they have Ottawa Jewish cemeteries fonds - 1896-1995 consisting of .2m of records, plans and photographs. The fonds consist primarily of correspondence, reports, site development planning records and plans for the new Jewish cemetery, Osgoode Township, as well as some inventories, plans, correspondence, minutes and rules and regulations for the first cemetery. Other cemetery records are located in individual congregation fonds, cassette tape collection under: Israel Shinder, Ottawa Vaad Ha'Ir Fonds, Standing Committee Series, Cemetery Committee.

The Jewish cemetery on the Metcalfe Highway, Gloucester, opened in 1893 when Abraham Sugarman, John Dover, Abraham Spector and Benjhamin Silver acted as trustees for the Congregation of Adath Jeshurun for the purpose of establishing a burial ground. The grounds were enlarged in 1907 under the guidance of Braham Kert, an Ottawa merchant, acting in trust for the Hebrew United Brethren of Ottawa (Agudath Achim). By 1942 these two congregations were joined by B'nai Jacob and Machzikei Hadas in expanding the cemetery grounds. Responsibility for the allotment and sale of plots rests with each congregation. Maintenance, capital expenditures and supervision is undertaken jointly by the Cemetery Committee.

By the early 1970s, the need for a new cemetery arose with the congregations

of Young Israel and Temple Israel having no sections of their own, and with the Agudath Israel having only a few plots remaining. The Congregations of Agudath Israel, Beth Shalom, Machzikei Hadas, Temple Israel and Young Israel formed the New Jewish Community Cemetery of Ottawa, Inc. in 1976 for the purpose of developing and administering the new cemetery location in Osgoode Township. Israel Shinder, chairman, and his cemetery committee provided the leadership. The land was consecrated on Sunday, October 31, 1976. A separate committee operates each cemetery.

The Ottawa Jewish Historical Society very kindly provided us with more information on their society and the Ottawa Jewish Archives; both were established in 1968 under the direction of Mrs. Shirley Berman. The Archives is currently located in 800 square feet with a fire-proof humidity-controlled vault at 21 Nadolny Sachs Private. It is staffed with professional archivists. The collection includes thousands of photographs along with family and organizational histories, personal interviews and tapes of our public lectures.

The Historical Society has offices at 153 Chapel Street. It presents four public lectures of community historical interest each year and also conducts bus tours periodically of Old Jewish Ottawa and the By Ward Market. In 1998 the Society had a fund-raising campaign and raised over \$200,000. These proceeds helped finance the move of the Archives into their present location. In November 2001, the Archives were turned over to the Ottawa Jewish Community Council for administration, but

the Historical Society continues to provide financial assistance.

After the Archives moved to its new premises, the Historical Society digitized all copies of the Ottawa Jewish Bulletin since 1937 until the present time, and they are now accessible on the computers in the Archives. They are continually being updated. The Ottawa Post of the Ottawa Jewish War Veterans has published a book "There I Was... A Collection of Reminiscences by Members of the Ottawa Jewish Community who Served in World War II" which the Historical Society helped to finance. This book is distributed by the Historical Society throughout the year to every Bar and Bat Mitzvah celebrant in the city. The Historical Society funds the University of Ottawa for research papers on historical Jewish topics relating to Eastern Ontario and Western Quebec. They are currently negotiating with Carleton University to undertake a similar program. The Society is also going to embark on writing a book of three to four hundred pages on the history of the Ottawa Jewish Community since its inception. This will be published within a couple of years in softcover. There are several other projects which the Board of Directors is considering. Membership in the Society is approximately one hundred and seventy-five and is actively growing. We encourage anyone who would like further information on the Ottawa Jewish Historical Society or the Ottawa Jewish Archives to visit them. For hours of operation please call their office at 244-8291.

Our thanks to the Ottawa Jewish Historical Society for providing us with this information.



United Jewish Community Cemetery

*Gloucester Historical Society/
Société Historique de Gloucester*

Annual General Meeting

Place: Gloucester Museum - 4550 Bank Street, at Leitrim Road

Date: Sunday, April 27, 2003

1:30 pm - Meet and Greet with tours of the museum collection

2:00 pm - Annual General Meeting followed by Guest Speaker:

Ben Stafford

Topic: "Memories of Hurdman's Bridge"

Ben Stafford will describe the village of his childhood in the period 1936-1947. His presentation will be followed by a discussion and shared memories. Maps of Ben's village will be handed out before the presentation.

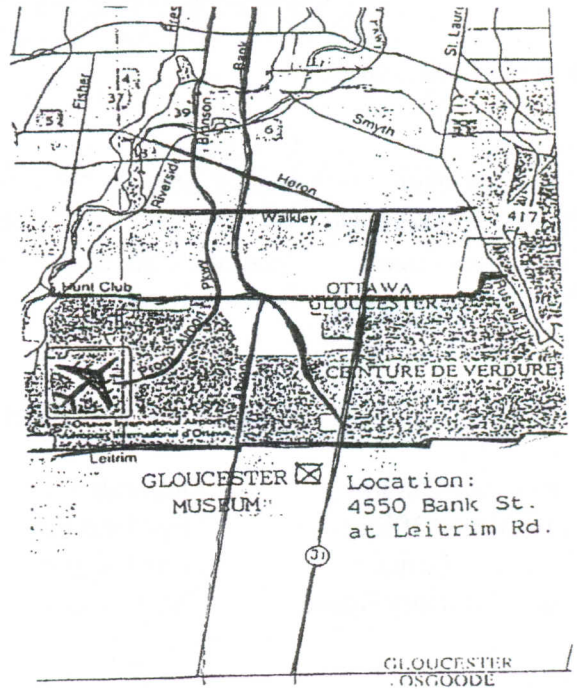
All Welcome

Admission Free: Light Refreshments

Background: Hurdman's Bridge was a small community situated on the east bank of the Rideau River along Tremblay, River and Russell Roads. Since then the bridge has been demolished and the railway lines removed. The area is now occupied by the Queensway and RCMP headquarters.

**BOOKS AVAILABLE FROM THE
GLOUCESTER HISTORICAL SOCIETY:**

- A History of Gloucester Historical Society*
by Grace Johnson.....\$2.00
- Belden Map of Gloucester, 1879*.....\$5.00
- Billings Bridge: My Village, My Life*
by Gerard and Bernard Pelot.....\$20.00
- Blackburn-Glen Ogilvie: Centennial History*
by Anna Elliott.....\$ 2.00
- Bowesville: A Place to Remember*
by Grace Johnston.....\$15.00
- Carlsbad Springs/Ramsaywille Branch East
Carleton Women's Institute 1934-1994*..\$ 4.00
- Gloucester Roots*
by Lois Kemp.....\$20.00
- Memories of the Lockstations*.....\$ 4.00
- Milk/Cream Produce-Distributors in
Gloucester 1892-1975*
by Grace Johnson.....\$10.00
- Valley Views*.....\$10.00



If you have memories of life in Gloucester or stories of schools or families from early days, and would like to share them, please give us a call. Artifacts and photographs of yesteryear are always welcome additions to the Museum.

Call us at 822-2076 to talk about it!

About the wooden bicycle (see front cover) -

In 1898 James Blair, a 17-year old who lived in Gloucester on the present site of Ritchie Feed & Seed store off Innes Road, built himself a wooden bicycle which he rode all over the farm and to the Byward Market in Ottawa. This amazing bicycle can be seen in the Gloucester Museum.

Board of Directors

President	Guy Legault	Directors:	Denise Amyot
Vice-President	Mary Patterson		Val Collins
Recording Secretary	Mary Boyd		Florence Ladds
Correspondence	Jean-Marc Jossinet		Aline Mageau
Treasurer	Graham Ritchie		Jacqueline Rawes
			Joan Scott

GLOUCESTER MUSEUM & ARCHIVES

Supervisor/Curator	Deborah Scott
Collections Officer	Olga Pluviati
Education Officer	Anik Despres
Chair, Advisory Board	Guy Legault

IF YOU HAVE NOT YET RENEWED YOUR MEMBERSHIP, OR IF YOU WISH TO BECOME A NEW MEMBER, PLEASE COMPLETE THE FORM BELOW AND SEND IT IN WITH YOUR CHEQUE. STILL ONLY \$10.00 PER YEAR OR \$40.00 FOR A LIFE MEMBERSHIP!

-----cut-----

Membership Form -Gloucester Historical Society/Société historique de Gloucester

Membership/Adhésion 2002 - \$10.00 for one year..... \$40.00 for life membership.....

NAME: _____

ADDRESS: _____

CITY: _____ PROV _____ POSTAL CODE _____

Mailing Address: Gloucester Historical Society
4550B Bank Street,
Gloucester, Ontario
K1T 3W6 Tel: 822-2076