



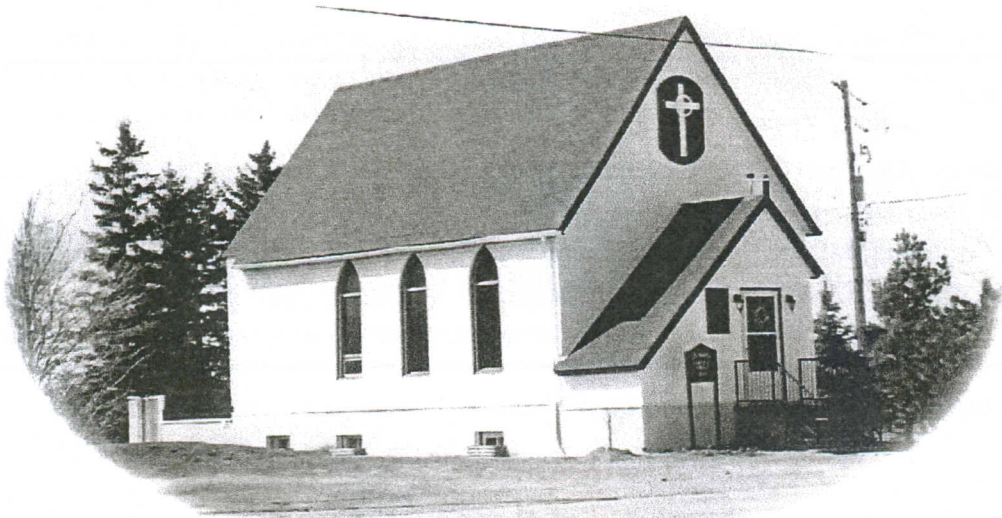
# *Historic Gloucester*

Quarterly Newsletter of the

**GLOUCESTER HISTORICAL SOCIETY  
and THE GLOUCESTER MUSEUM AND  
ARCHIVES**

VOLUME 6 NO. 2

Fall 2005



*Merry Christmas and a Happy New Year  
To all Gloucester Historical Society Members*

**President's Message..... Mary Boyd 2**

**New Glen Ogilvie Book..... Robert Serré 3**

**HMCS Gloucester..... Mary Boyd 4**

**Leitrim Community Design Plan..... 5**

**Books Available From the Society..... 6**

**Membership Form..... 7**

*Cover Photo:*

*St. James' Anglican Church, Leitrim, is located on Bank Street at the corner of the Leitrim Road, just around the corner from the Gloucester Historical Society Office. St. James' has been an active parish for many years and a detailed church history is currently being written. The parish also looks after the Wood's Cemetery on Bank Street.*

---

*Historic Gloucester* is published by The Gloucester Historical Society and The Gloucester Museum and Archives. It is intended as a Newsletter to members of the Society to provide interesting articles on Gloucester's past and to keep them informed of new acquisitions by the Museum, publications available, upcoming events and other items of general interest. Comments and suggestions regarding the Newsletter are always welcome.

*Gloucester Historical Society gratefully acknowledges the financial support of the City of Ottawa.*

## President's Report

Dear Members:

At the last Annual General Meeting I took over from Guy Legault who retired after being our President for the last nine years. Guy had led the Society through some difficult times and his leadership will be missed. Good luck Guy in all your future endeavours. You will no doubt continue to be a strong voice in support of Local Heritage and Canadian History.

Now that we are no longer responsible for the care of the Gloucester Museum, the Gloucester Historical Society is in the continuing process of reinventing itself. We plan to concentrate more on publishing in the coming year. Thanks to Robert Serré, there will be a book out soon on Glen Ogilvie and at least three more books are planned for 2006. These books will each cover a certain area of the former Township of Gloucester and will contain information on pioneer families in that particular area.

The Society, like most of its fellow heritage organizations, faces the challenge of reaching out to the community and lighting a renewed interest in collecting, preserving and researching our local history.

One problem we face in attaining these goals is recruiting new volunteers (a problem that is common to many volunteer organizations), and a revitalizing of our membership. We are always on the lookout for anyone interested in donating their time either on the board, at fund raising, or volunteer recruiting. If you, or anyone you know, is interested in the history of Gloucester, we would like to hear from you!

On behalf of the Gloucester Historical board I wish you all a very happy holiday and a Merry Christmas.

*Mary Boyd*  
President



## New Glen Ogilvie Book

In August 2005, Mary Boyd, newly elected President of the Gloucester Historical Society, called a meeting to discuss the possibility of gathering sufficient information from the Society's files to publish histories of pioneer families. The meeting was attended by Jean-Marc Jossinet, Aline Mageau, Joan Scott and Robert Serré. It was decided that a series of publications would be planned, based on the former Township of Gloucester's various communities.

At the Board meeting held on November 8, Robert announced that he had prepared a 24-page manuscript on 28 pioneer families of Glen Ogilvie. The book was printed the following week and will be on sale by the Society. The Glen Ogilvie families described in the book are as follows:

ALLEN  
BLAIR  
CHRISTY  
CLARKE  
COWAN  
COWIESON  
CRAIG  
DELANEY  
FERGUSON  
GRAVELLE  
HILL  
HOPKINS  
HUDSON  
KEHOE  
KENNEDY  
LAWS  
McGUIRE  
McHUGH  
McPHAIL  
MOORE  
O'DONNELL  
OGILVIE  
PHAIR  
RADCLIFF  
RAIN  
SCHARFE  
SPARKS  
WOODBURN

The Publications Committee is preparing other manuscripts, and hopes to have more announcements to make in 2006.

Robert Serré  
Secretary, Publications Committee

### Two of Glen Ogilvie's Pioneers

For those of you who are not familiar with the area of Glen Ogilvie, here is a little history of two of its most notable citizens.

William Ogilvie's grandfather arrived from Ireland about 1842 and settled in what then became known as the Ogilvie Settlement. Later the name was changed to Glen Ogilvie, but in the late 1860s it became part of the Village of Cyrville.

Recognized nationally for his work as a land surveyor, explorer and writer, William Ogilvie was the first Commissioner of the Yukon Territory. Ogilvie was responsible for defining the Yukon-Alaska border in 1887. He was also the author of *Early Days in the Yukon*, a book which is still considered one of the most authoritative accounts of the history of the Yukon.

Another well-known figure of the area was James Henry Blair, who was the eldest of eleven children and was born on May 24, 1881. Young Blair was fond of constructing clay and wood models on his father's farm on Innes Road. One of his efforts resulted in a hand-made, wooden bicycle which he would ride into Centretown Ottawa, much to the amusement of local townspeople.

In later years James Blair became a dentist and held many patents for his inventions, particularly those related to dentistry.

It is interesting to note that the intersection of Ogilvie and Blair roads honours two pioneer families who made great contributions to our heritage, both locally and nationally.



## HMCS Gloucester

By Mary Boyd

Over the past year or so, a group of retired Chiefs and Petty Officers (Pos) of the old Communicator (S) Branch have been doing the preparatory legwork for a project to preserve the memory of HMCS Gloucester. The intention was to install a cairn with commemorative plaque at the former entrance road to the base.

The property on which the former Naval Radio Station was located has deteriorated badly since the Gloucester base was closed in 1972. The large PMQ area is now a vacant field. The parade square and the central mast are gone. Facing the old parade square on the west side was a long building which housed the Officers' wardroom at one end and the Chiefs' and Petty Officers' mess at the other. There is no real evidence that this building was ever there. Facing this area, on the opposite side of the parade ground was the training building with, at its centre, a quarterdeck, ship's bell, and all the paraphernalia of a naval shore establishment. This building, too, is gone. To the north of the parade ground was the main galley and cafeteria - also gone. To the right rear was the large L-shaped barracks block for Leading Seamen and below. This too has disappeared. The only remnant of the old navy base (as it was called) is the gymnasium, which is now the local branch of the Royal Canadian Legion.

HMCS Gloucester, like the other stations in the Supplementary Radio System (SRO), was always a mystery to the other parts of the Royal Canadian Navy (RCN). The activities that took place inside the Operations sections was a source of speculation by those not cleared to go "beyond the Green Door." Indeed, for most of its existence, the Supplementary Radio System was the only branch of the RCN to perform the same tasks in peacetime as it would in war, that is, the collection and processing of intelligence obtained surreptitiously by electronic means. This includes high frequency direction finding, interception of radio transmission, and cryptographic analysis. Gloucester - nicknamed Glo by most branch

members - was unique in this framework in that it was the headquarters for the SRS and the central training establishment for all the operational skills required in the branch. Glo achieved this assignment in the classic navy way, silently and without fanfare. It produced many hundreds of skilled operators, technicians, and analysts during its three decades of existence from 1943 to 1972.

The program to ensure that Glo's memory is perpetuated has been spearheaded by retired CPO Morley McAllister, assisted by Chiefs Gerry Burton, Don Cameron, Terry Whalley, Ray White and others. The project was completed by early summer 2005.

A six-foot cairn was erected on the boulevard portion of the main road entering the old station. On this cairn a bronze plaque tells the abbreviated story of the pride the former members have for being part of this great group of shipmates. The plaque—dans les deux langues officielles, naturellement—will reflect Glo's role in World War II, the Cold War, and its legacy for those who follow.

### ***Did You Know?***

- *That the first Christmas tree in England apparently was at Windsor Castle in the 1840s.*
- *That the first Christmas tree in North America supposedly was in Halifax in 1846.*
- *That years ago Christmas trees were lit by real candles.*
- *That Christmas tree decorations were usually hand made, often using pine cones, paper chains, candies and sometimes presents.*
- *That Christmas cards were first sent in the early 1840s in England and about 1870 in Canada.*
- *That Charles Dickens wrote "The Christmas Carol" in the 1840s.*



# Leitrim Community Design Plan

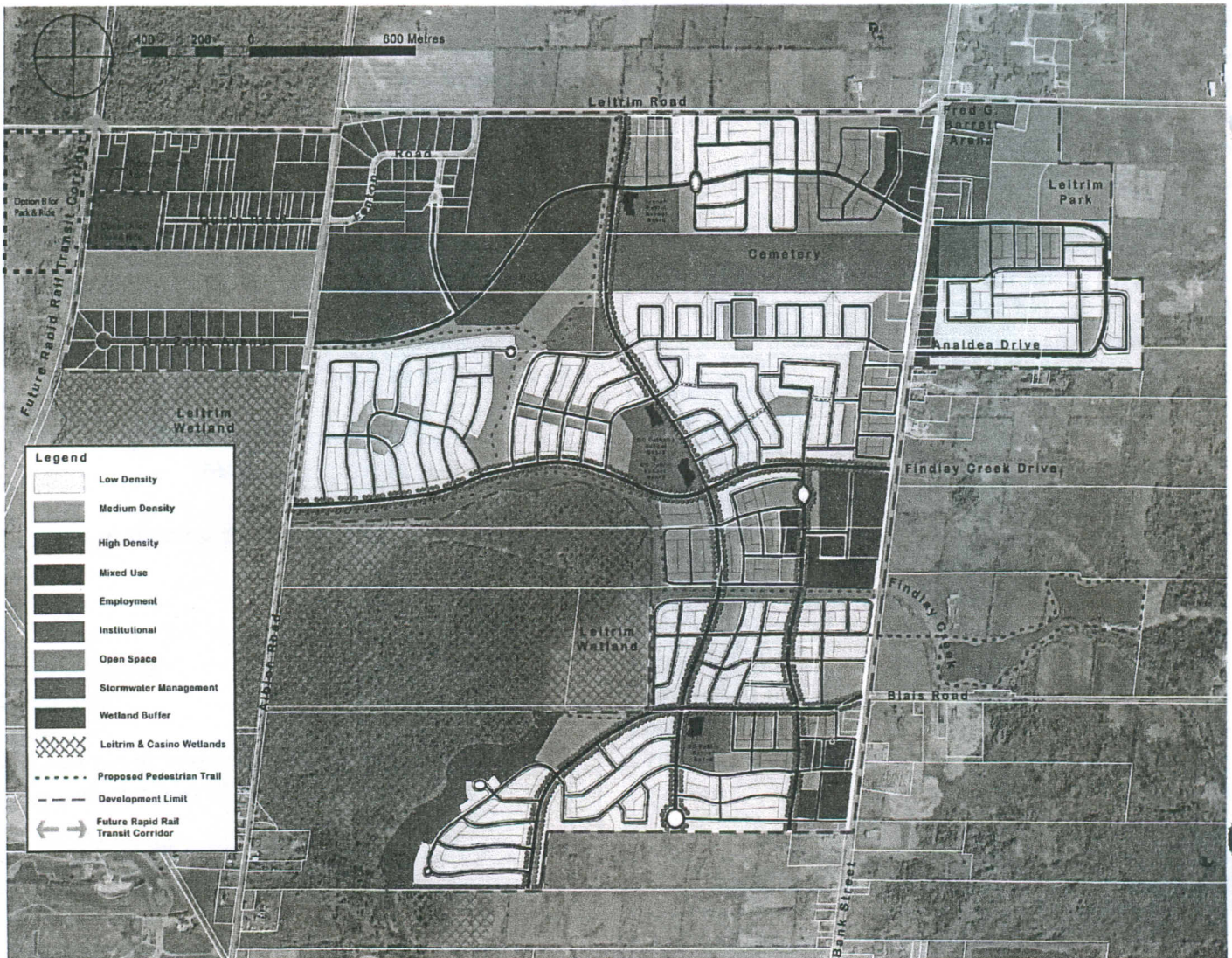
On July 13th, 2005, in accordance with Section 17(23) of the Planning Act, notice was given of the City Council's decision to adopt Amendment No. 30 to the Official Plan of the City of Ottawa.

The purpose of this amendment is to change the designation on certain properties along Leitrim Road, Bank Street and Analdea Road from Employment Area to General Urban Area, in order to match the land use plan of the Leitrim Community Design Plan (CDP). The Community Design Plan encompasses approximately 500 hectares of land. This area has been designated as a "Developing Community" and it was for this

reason that the Leitrim Community Design Plan was required. The area affected is located south of Leitrim Road, west of Bank Street and east of Albion Road.

If no appeals to this proposed amendment were received by August 10th, 2005, the decision of the City Council was final and the full force and effect of the amendment deemed to have come into effect on the date of its adoption by City Council.

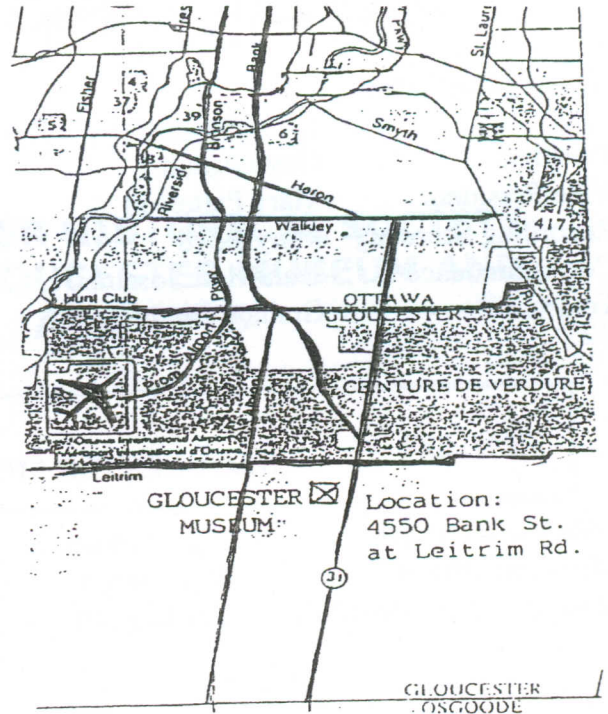
The Land Use Plan Within Leitrim CDP is shown below. As this plan does not reproduce well in black and white, further information on Amendment No. 30 can be obtained from Kevin Muir, 613-580-2424, extension 27815 or e-mail [kevin.muir@ottawa.ca](mailto:kevin.muir@ottawa.ca).





**BOOKS AVAILABLE FROM THE GLOUCESTER HISTORICAL SOCIETY:**

- A History of Gloucester Historical Society*  
by Grace Johnson.....\$2.00
- Belden Map of Gloucester, 1879*.....\$5.00
- Billings Bridge: My Village, My Life*  
by Gerard and Bernard Pelot.....\$20.00
- Blackburn-Glen Ogilvie: Centennial History*  
by Anna Elliott.....\$ 2.00
- Bowesville: A Place to Remember*  
by Grace Johnston.....\$15.00
- Carlsbad Springs/Ramsaywille Branch East  
Carleton Women's Institute 1934-1994..*\$ 4.00
- Gloucester Roots*  
by Lois Kemp.....\$20.00
- Memories of the Lockstations*.....\$ 4.00
- Milk/Cream Produce-Distributors in  
Gloucester 1892-1975*  
by Grace Johnson.....\$10.00
- Pioneer Families of the Gloucester  
Quarries in Eastern Ontario*  
by Robert Serré.....\$10.00
- Valley Views*.....\$10.00



*If you have memories of life in Gloucester or stories of schools or families from early days, and would like to share them, please give us a call. Artifacts and photographs of yesteryear are always welcome additions to the Museum.*

**Call us at 822-2076 to talk about it!**

**About the wooden bicycle (see front cover) -**

In 1898 James Blair, a 17-year old who lived in Gloucester on the present site of Ritchie Feed & Seed store off Innes Road, built himself a wooden bicycle which he rode all over the farm and to the Byward Market in Ottawa. This amazing bicycle can be seen in the Gloucester Museum.

---

**GLOUCESTER HISTORICAL SOCIETY - Phone/Fax 822-2076**

**Board of Directors**

President	Guy Legault	Directors:	Denise Amyot
Vice-President	Mary Patterson		Ed Kirk
Recording Secretary	Mary Boyd		Florence Ladds
Correspondence	Jean-Marc Jossinet		Aline Mageau
Treasurer	Graham Ritchie		Jacqueline Rawes
			Joan Scott
			Robert Serré

**GLOUCESTER MUSEUM & ARCHIVES**

Collections Officer	Olga Pluviati
Education Officer	Anik Despres
Chair, Advisory Board	Guy Legault

**IF YOU HAVE NOT YET RENEWED YOUR MEMBERSHIP, OR IF YOU WISH TO BECOME A NEW MEMBER, PLEASE COMPLETE THE FORM BELOW AND SEND IT IN WITH YOUR CHEQUE. STILL ONLY \$10.00 PER YEAR OR \$40.00 FOR A LIFE MEMBERSHIP!**

-----cut-----

**Membership Form - Gloucester Historical Society/Société historique de Gloucester**

Membership/Adhésion 2004 - \$10.00 for one year..... \$40.00 for life membership.....

NAME: \_\_\_\_\_

ADDRESS: \_\_\_\_\_

CITY: \_\_\_\_\_ PROV \_\_\_\_\_ POSTAL CODE \_\_\_\_\_

Mailing Address: Gloucester Historical Society  
4550B Bank Street,  
Gloucester, Ontario  
K1T 3W6 Tel: 822-2076