



# ***Historic Gloucester***

Newsletter of the

**GLOUCESTER HISTORICAL  
SOCIETY**

[www.gloucesterhistory.com](http://www.gloucesterhistory.com)

VOLUME 13, NO 1

Spring 2012



***Bethany United Church***

**From the President’s Desk..... Robert Sérre 3**

**Bethany United Church..... Eleanor Lillico 4**

**Who’s Who in Gloucester..... Robert Sérre 6**

**Publications..... 8**

**“There’s a Radar in My Kitchen” Flyer..... 10**

**Membership Form ..... 10**

THE GLOUCESTER HISTORICAL SOCIETY  
 IS HAPPY TO ANNOUNCE  
 THAT ITS HISTORY ROOM IS OPEN TO THE PUBLIC  
 EACH THURSDAY FROM 10:00 A.M. to 3:00 P.M.  
 BETWEEN MAY 3 AND OCTOBER 25, 2012,  
 OR BY APPOINTMENT

LOCATION: 4550B BANK STREET (AT LEITRIM ROAD)

FOR MORE INFORMATON  
 Contact Robert Serré at 613-749-0607 or bob.rosealine@gmail.com

**Cover Photo:**

*This is a photo of Bethany United Church, 3150 Ramsayville Road, Gloucester, Ontario. On page 4 you will find a detailed history of this church which evolved from a request for a Mission Station in 1860, a wood building constructed in 1870 and a major renovation in 1915 which resulted in the current brick building.*

**Historic Gloucester** is published by The Gloucester Historical Society. It is intended as a Newsletter to members of the Society to provide interesting articles on Gloucester’s past and to keep them informed of new acquisitions by the Museum, publications available, upcoming events and other items of general interest. Comments and suggestions regarding the Newsletter are always welcome.



*Gloucester Historical Society gratefully acknowledges the financial support of the City of Ottawa.*

**PRESIDENT’S REPORT**

Our Society is planning two new publications over the next two years. The first concerns a book to be entitled **Place Names of Gloucester**. This project is open-ended, which means that there is no cutoff date, so that new subdivisions being developed in what was formerly Gloucester will be integrated into the project. The second publication will be a book entitled **Who Was Who in Gloucester**. This project is not open-ended, and the cutoff date is 2001, the year of amalgamation, when the former city of Gloucester ceased to exist as such. A sample of what can be expected is included in this newsletter.

Earlier this year, our Society received a letter from the British Isles Family History Society of Greater Ottawa. It was signed by its president Glenn Wright, and with it came a cheque for \$100.00. BIFHSGO decided to make this donation to support the work of our Society. I wrote a letter to Glenn Wright to thank him on behalf of our Society.

Something else happened earlier this year. All remaining documents belonging to the former Gloucester Archives have now been transferred from the city’s facility in Leitrim to the Central Archives on Tallwood Drive, off Woodroffe Avenue, south of Algonquin College. Our Society still has its office at the corner of Leitrim Road and Bank Street South, and we can still show people the area where the artefacts of our former museum are kept. This summer, we will again open our History Room to the public, every Thursday from early May to late October, from 10 a.m. to 3 p.m.

**Public Notice** – The Gloucester Historical Society notifies all members that photographs donated to the society over the years may be copied, distributed or published by the society or the Ottawa City Archives. Whenever possible, credit will be given to the original donor of a photograph. If you have donated photographs to the society and you wish to restrict the use of those photographs, please notify the Gloucester Historical Society.

**Board of Directors  
2011-2012**

President:	Robert Serré (2013)*	Directors:	Bob Kemp (2012)
Past President:	Mary Boyd (2014)		Jean-Marc Jossinet (2014)
Vice-President			Aline Mageau (2013)
and Webmaster:	Glenn Clark (2012)		Mary Patterson (2014)
Treasurer:	Flo McRostie (2012)		Russell Johnston (2014)
Secretary	Shirley McCooeye (2012)		Laurel Sherrer (20140)
Newsletter Editor:	Joan Scott (2014)		

\* Indicates date when this person is up for re-election to Board of Directors.

**BETHANY UNITED CHURCH**

by Eleanor Lillico

In the early years of this rural community, many of the settlers were members of Knox Presbyterian Church in Bytown. Two elders, William Heuston and James Lillico, representing East Gloucester worshippers requested a Mission Station in 1860. For the next few years they met for worship in a schoolhouse located north of the present church property. In 1868 they applied to Presbytery to become a congregation. The land was purchased and a wooden church was built by 1870. A manse was added to the property at a later date. Many of the farmers who lived a distance away found it difficult to attend, so the Session considered building a second but inexpensive church at Farmers Corners. St. David's Presbyterian Church was built on the "Farmer" property in 1886. We were now called East Gloucester Pastoral Charge with one minister and two church buildings.

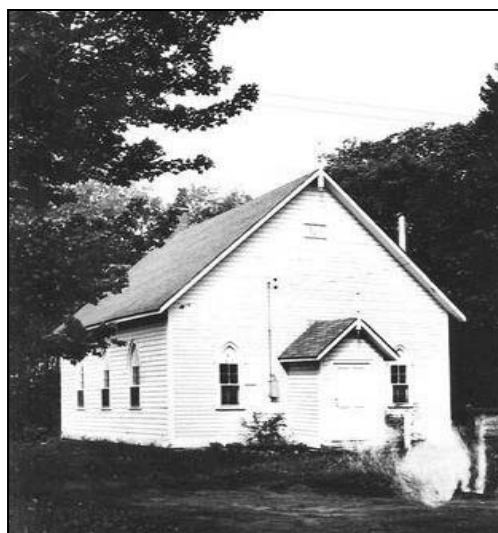
Both Sabbath schools were held before the church services. In 1904 a Young People's Guild was formed. There was even an East Gloucester Presbyterian Sabbath School Library which had 417 books available for loan. By 1910 the number of families under pastoral oversight was 55, 127 members in full communion and 202 enrolled in the Sabbath School. A Ladies Aid Group was formed in 1908 and contributed to raising funds to support the church projects as well as Missions. In 1915 a major reconstruction of the Ramsayville church was undertaken under the guidance of Rev. F. E. Miller. With an architect's plans, the wooden church was raised, a basement built, the outside was bricked and a square tower was built as an entrance. Electrical lights were installed in 1926. In these years the church was

the Centre of the community for spiritual and social events.

In 1925, following a vote of communicants, both St. David's and East Gloucester Churches joined the United Church of Canada. [Source- East Gloucester Presbyterian Pastoral Charge History, 1860-1925, a booklet prepared for Bethany Heritage Sunday, June 24, 2001]



This was the East Gloucester Presbyterian (United) Church and Manse, Ramsayville, 1870-1915



This was St. David's Presbyterian (United) Church, Farmer's Corners, 1886-1962

The Sunday Worship services, Sunday schools, Session, Stewards and Women's groups continued under the United Church leadership. A Young People's group was begun in the ministry of Rev. J. A. Ulley (1923-1931). Cars became the means of transportation and the Young People gathered more frequently to produce plays, present musical concerts and form softball teams. Summers brought socials and Sunday School picnics by both churches. The Women's Association held Anniversary suppers each September. Ministry was provided by Rev. G. H. Dunlop (1931-41). During both World Wars, many of our members volunteered to serve their Country and several died in each conflict. A memorial plaque is in our sanctuary.

Hawthorne U. C. joined with East Gloucester to form a new Pastoral Charge and the Rev. J Macaskill was inducted in August 1941. Over the years many groups were formed in response to the community—Canadian Girls in Training (CGIT), Messengers, Tyros, Sigma-C, Hi-C and Explorers. A Christian Education committee was formed to oversee all groups. Summer camps were conducted, closing banquets were organized and most groups participated in worship services throughout the years. From 1941 to 2002 twelve dedicated ministers led us in Worship and Christian fellowship. A small addition with an enlarged kitchen area, a Minister's study, and the renovation of the sanctuary were completed in the late 1950's.

The congregation of St. David's held their last service in 1962 and joined in worship at the Ramsayville church building which was renamed Bethany United Church. The manse next door ceased to house the Ministers' families and became a Christian Education building and at present serves as the Sunday School rooms.

With the introduction of the Green Belt around Ottawa in the 1960's farms and businesses were bought by the National Capital Commission. The possible satellite community and the building of the 417 Highway changed our community forever. While many families moved away, many continued their worship at Bethany.

Bethany United Church became a single point charge as of July 1, 2003 and is flourishing in its newfound independence. We are growing as a Christ Centred Church. Rev. Fred Milnes (Supply Minister) guided us through this significant time of change. To-day young and senior families are drawn from a wider rural and suburban area. We have a strong Sunday School, and a Contemporary Praise Band, called "The Kindred Spirits" who compliment the traditional choir and Music Director with a service once a month. The Church family undertake two highly successful fund raisers, serving an Annual Beef Dinner in April and an Anniversary Turkey Dinner in September. We support U. C. Missions, Gloucester Food Cupboard, Canadian Bible Society and the U.C.W. visit a nearby Home for the Mentally Challenged. For many years we have had an annual winter retreat to Circle Square Ranch for our church families.

In 2003 a group within our Church took developed the following new Vision Statement which reads "The purpose of Bethany United Church is to help people love Christ, and all others as we learn, share and spread God's word." An Expansion committee was established to update the existing building to meet the demands of a growing congregation and Sunday School. The Alpha Program has been initiated to help us grow in our faith, get to know each other better and reach out to others in the community.

## WHO WAS WHO IN GLOUCESTER

by Robert Serré

[The following entries are taken from a book our Society hopes to publish in the not too distant future. It will include men and women who lived in Gloucester, and who left their mark in one way or another.]

**Elizabeth Augusta TOMKINS**, daughter of Ann Hopkins and Henry Tomkins, was born on 6 February 1864. She was educated at Johnston's Corners and in Hamilton. She taught school at Mooney's Bay in 1880-81, and in 1881-85 at Hawthorne (School Section No. 16). She was the principal of Hintonburg Public School for ten years, and taught in Hamilton. As of 1902, she taught at Lisgar Collegiate, where she was nicknamed Sis. She retired from active teaching in 1932, travelled in Europe and the Near East, and was active in the Anglican Church. As of 1940, her residence was in Manotick. She died in November 1959, and was buried in All Saints Anglican Cemetery in Greely.

Source: Tomkins family file in the History Room of the Gloucester Historical Society.

**Michel CYR**, son of Louis Cyr and Louise Monette, was born around 1801 in Lower Canada. He married Agathe Desjardins on 10 January 1826 in Sainte-Rose near Montreal, and they had two sons named Michel and Joseph. He took a second wife, marrying Adélaïde Vezeau on 1 April 1845 in Saint-Martin near Sainte-Rose, and they had a daughter named Joséphine. In 1853 he bought lot 27 in the second concession of the Ottawa Front in Gloucester Township, founding the village of Cyrville. He transferred the western half of lot 27 to his son Joseph, and the other half to his son Michel. He was a grocer at the time of the 1871 census.

### Sources:

Leury, Jean. Historique de la paroisse Notre-Dame-de-Lourdes de Cyrville, Ontario. Cyrville, Paroisse Notre-Dame-de-Lourdes, 1948.

Serré, Robert. Pioneer Families of Cyrville (Gloucester Township). Ottawa, Gloucester Historical Society, 2006.

**James Henry (Jim) BLAIR**, son of Hugh Blair and Jean (Jane) Greer, was born in Gloucester Township in 1881. Blair Road was named after this family, which moved to Glen Ogilvie when Jim was still young. He built a wooden bicycle when he was 17, and made quite a sensation when he rode it into Bytown. In 1900, he served with the Queen's Own Canadian Hussars in the Boer War. He was always inventive, held a number of patents, and helped develop the Ross Rifle in Quebec City during World War I. He married Victoria Bridgeford in Quebec City, and later went to the United States. He died in 1955, and his wooden bicycle was donated to the Gloucester Historical Society.

### Sources:

Blair family file in the History Room of the Gloucester Historical Society.

Serré, Robert. Pioneer Families of Glen Ogilvie (Gloucester Township). Ottawa, Gloucester Historical Society, 2005.

*The Leader*, Gloucester News, February 1983, page 13.

**John CUNNINGHAM**, a Roman Catholic Irishman, settled on lots 17, 18 and 20 in the third concession of the Rideau Front in Gloucester Township. He set up an inn and tavern on his land. The inn was erected on a solid stone foundation, with four guest rooms upstairs, and stabling for guests' animals. The inn was located on the road between Bytown and Prescott, and when the Bytown and

on his land. The inn was erected on a solid stone foundation, with four guest rooms upstairs, and stabling for guests' animals. The inn was located on the road between Bytown and Prescott, and when the Bytown and Prescott Railway line was cut through the township, a station and siding were built near Cunningham's inn. Not surprisingly, the first town meeting was held in this inn on 2 January 1832.

Source:

Johnston, Grace. Bowesville: a place to remember. Gloucester Historical Society, 1988.

**Ellen Mary EVANS**, eldest daughter of Thomas and Mary Ann Evans of Ireland, was born in Nepean Township on 30 July 1833. She was a teacher at the Gloucester Quarries (School Section No. 9) in 1863. In 1871 she ran a store at the Quarries, and served as postmistress of the first post office, named Rock Village. She remained postmistress until February 1884. When the 1881 census was taken, she was a general merchant, dealing in stone and lime. She died on 3 August 1919, and was buried three days later in Beechwood Cemetery.

Sources:

*Ottawa Citizen*, 5 August 1919, page 4.

Serré, Robert. Pioneer families of the Gloucester Quarries in Eastern Ontario. Ottawa, Robert Serré, 2004.

**Camille GLADU**, son of Jean-Baptist Gladu and Alexina Séguin, was born in Clarence Creek on 20 October 1872. His family arrived in Janeville (later Eastview) around 1880. He married Emily Lane in Janeville's Notre-Dame-de-Lourdes church on 10 June 1894. Around 1900 he opened a butcher shop. He was the last reeve of the village of Eastview (1911-12) and the first mayor of the town of Eastview (1913-15), serving again as

mayor in 1920-21. He died in Eastview on 5 November 1921, and was buried in Notre Dame Cemetery.

Sources:

Paquette, Léo. Vanier (Eastview) au temps du premier maire, Camille Gladu, 1913-1921. Ville de Vanier, Léo Paquette, 1992.

Pelletier, Jean Yves. Ottawa Notre Dame Cemetery, an historic cemetery of national importance established in 1872. Quebec City, Les Éditions GID, 2009.

**Daniel H. EASTMAN** was born in 1826. He purchased lot 3 in the seventh concession of the Ottawa Front, in Gloucester Township, from Charles Billings on 1 September 1864. In 1867 he built a hotel and stables, running a stage from his hotel to Ottawa. The area was soon named Eastman's Springs after him and the boiling spring on his property. He served as postmaster from 1 June 1872 until his death, on 23 July 1885. He was interred in St. George's Anglican Cemetery, Hawthorne.

Sources:

Baird, Rusty et al. St. George's Anglican Cemetery, Hawthorne, Gloucester Township. Ottawa Branch, Ontario Genealogical Society, 1981.

Boyd, Mary et al. Remembering Carlsbad Springs (Gloucester Township). Ottawa, Gloucester Historical Society, 2009.



*Middle Age is that time of life when you don't have to have fun to enjoy yourself.*

**Publications Available From the Gloucester Historical Society:****For further details regarding publications visit our website: [www.gloucester history.com](http://www.gloucesterhistory.com)****(Postage, if mailed, in brackets)**

<b><i>Blackburn - Glen Ogilvie - Centennial History 1887-1967</i></b> Compiled and Edited by Mrs. Anna Elliott	<b>5.00</b> (3.00)
<b><i>Bowesville: A Place to Remember</i></b> By Grace Johnston	<b>20.00</b> (12.00)
<b><i>Famillies pionnieres des Carrieres de Gloucester dans l'Est de l'Ontario</i></b> By Robert Serré	<b>10.00</b> (3.00)
<b><i>Famillies pionnieres de Cyrville (Canton de Gloucester)</i></b> By Robert Serré	<b>10.00</b> (3.00)
<b><i>Gloucester Lions Club Inc. , History of the First 42 Years, 1968 to 2010</i></b> By the History Committee of the Gloucester Lions Club and Robert Serré	<b>25.00</b> (8.00)
<b><i>Gloucester Memories</i></b> By Mel Rowat	<b>5.00</b> (3.00)
<b><i>Gloucester Roots</i></b> Compiled and edited by Lois Kemp	<b>20.00</b> (5.00)
<b><i>Gloucester Township Ratepayers Listed by Family Name and Concession/Lot Number for the Years 1855, 1864 and 1872</i></b> Compiled by Robert Sérre	<b>10.00</b> (3.00)
<b><i>Hawthorne Reflections</i></b> by Laurel Sherrer	<b>10 .00</b> (3.00)
<b><i>Memories of the Lock Stations</i></b> Compiled and Edited by Grace Johnston	<b>5.00</b> (3.00)
<b><i>Milk/Cream Producers—Distributors in Gloucester 1892-1975</i></b> Compiled and edited by Grace Johnston	<b>15.00</b> (5.00)
<b><i>Pioneer Families of Cyrville (Gloucester Township)</i></b> By Robert Serré	<b>10.00</b> (3.00)
<b><i>Pioneer Families of Glen Ogilvie (Gloucester Township)</i></b> By Robert Serré	<b>10.00</b> (3.00)



**Publications (continued):**

<b><i>Pioneer Families of the Gloucester Quarries</i></b> By Robert Serré	<b>10.00</b> (3.00)
<b><i>Pioneer Families of Hurdman's Bridge (Gloucester Township)</i></b> By Robert Serré	<b>10.00</b> (3.00)
<b><i>Pioneer Families of Janeville (Gloucester Township)</i></b> By Robert Serré	<b>10.00</b> (3.00)
<b><i>Pioneer Families of New Edinburgh, Volume One: 1830-1870</i></b> By Robert Serré	<b>10.00</b> (3.00)
<b><i>Pioneer Families of St. Joseph (Orleans) in Eastern Ontario</i></b> By Robert Serré	<b>10.00</b> (3.00)
<b><i>Pioneer Families of Rockcliffe Annex and Manor Park in Gloucester Township</i></b> By Robert Serré	<b>10.00</b> (3.00)
<b><i>Place Names of Ottawa, Canada's Capital 1791-1950</i></b> By Robert Serré	<b>12.00</b> (3.00)
<b><i>Remembering Carlsbad Springs (Gloucester Township)</i></b> By Mary Boyd and Robert Serré	<b>10.00</b> (3.00)
<b><i>The Story of the First English Church of Gloucester Township:</i></b> The history of St. James Anglican Church, Leitrim, 1853-2003 By Glenn Clark	<b>50.00</b> (20.00)
<b><i>1879 Belden Map of Gloucester Township</i></b> The map shows who owned each lot in 1879 as well as the location of roads, churches, schools and interesting features of the township during that early time.	<b>10.00</b> (5.00)

**Note:** Copies of publications may be ordered through: Robert Serré, President of the GHS, 1057 Riviera Drive, Ottawa K1K 0N7, e-mail: bob.rosealine@gmail.com. A shipping charge as shown for each publication will be added to mail orders.

*I tried to be a tailor, but I just wasn't suited for it ... mainly because it was a so-so job.*

*I tried to be a chef, figured it would add a little spice to my life, but I just didn't have the thyme.*

*I studied a long time to become a doctor, but I didn't have any patience.*



RADAR IN USE

Long-Range Early Warning Tower at Metcalfe Road Field Station developed for the R.C.A.F. by the Council. The antenna at the top finds the range and direction of aircraft out to 100 miles. Antennae up the side of the tower give the height of the aircraft.

# The Gloucester Historical Society

presents  
a lecture titled

## “There’s a Radar in My Kitchen”

by **Brian Mendes**

An illustrated and non-technical presentation explains Canada’s important role in developing military radar during World War II. Learn about the role of women.

Come and see Gloucester’s involvement and some rare period film footage taken at the former Metcalfe Road NRC Field Station in Blossom Park.

**Sunday, April 22, 2012 at 2:00 pm**

**Gloucester South Seniors’ Centre  
4550 Bank Street (just south of Leitrim Road), Gloucester**

Free Admission

There is free parking and light refreshments will be served.

Bus Route 144

The Gloucester Historical Society Annual General Meeting will precede the presentation.

For further information, please consult our website at [www.gloucesterhistory.com](http://www.gloucesterhistory.com)

or leave a message at 613-822-2076. Your call will be returned.

**Members Wanted:**

The Gloucester Historical Society is always looking for new members. Regardless of age, anyone who is interested in the history of Gloucester, as a Township, City, or part of the City of Ottawa, can benefit from membership in the Society. There is a well-stocked history room at our Leitrim Road office. Every Thursday, from 10:00 am to 3:00 pm from early May to the end of October, there are knowledgeable people there to help you in all aspects of research about your family, friends or neighbours in Gloucester.

Your membership entitles you to receive the *Historic Gloucester* newsletter four times a year so that you can keep up with what is going on with the GHS and read interesting articles of times and places of long ago. For more information on the Gloucester Historical Society be sure to check out our wonderful website at [www.gloucesterhistory.com](http://www.gloucesterhistory.com).

**Family Histories Wanted:**

If you have information on any family who resided in Gloucester, we would be happy to add this to our records. There may be others who would like to share this information but have been unable to find it. And, you may find that the family of someone you know was once a neighbour of your ancestors!

**Volunteers Needed:**

The GHS is always looking for volunteers to assist others with research, to assist at society functions or to help the Board of Directors in many other ways.

**IF YOU HAVE NOT YET RENEWED YOUR MEMBERSHIP, OR IF YOU WISH TO BECOME A NEW MEMBER, PLEASE COMPLETE THE FORM BELOW AND SEND IT IN WITH YOUR CHEQUE.**

**Membership Form—Gloucester Historical Society/Société historique de Gloucester**

Membership/Adhésion 2012 - \$15.00 for one year..... \$100.00 for life membership.....

NAME: \_\_\_\_\_

ADDRESS: \_\_\_\_\_

CITY: \_\_\_\_\_ PROV \_\_\_\_\_ POSTAL CODE \_\_\_\_\_

Mailing Address: Gloucester Historical Society  
4550B Bank Street,  
Gloucester, Ontario  
K1T 3W6